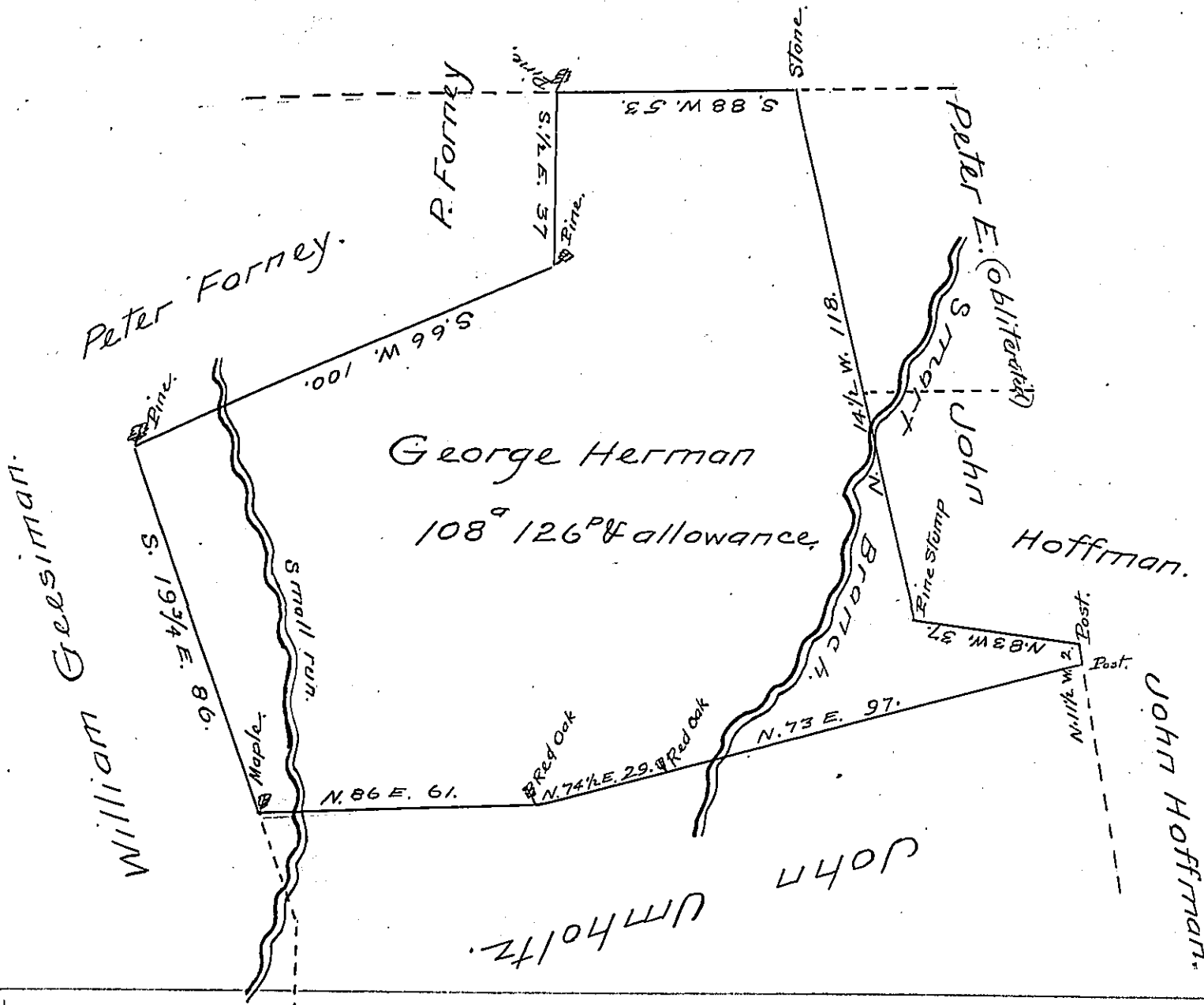


Adam Wise



The above draught represents part of a larger tract of land which was surveyed and returned on a warrant granted to Jacob Herman bearing date OCT 14th A.D. 1791 the same being situate in Mifflin Township Dauphin County containing one hundred and eight acres and one hundred and twenty six perches & allowance. Again surveyed in pursuance of the said warrant for - George Herman the first day of April A.D. 1822.

To Samuel Cochran Esq. P. James Maginness.
 Surveyor General of Pa. D.S.

IN TESTIMONY that the above is a copy of the original remaining on file in the Department of Internal Affairs of Pennsylvania, made conformably to an Act of Assembly approved the 16th day of February, 1833, I have hereunto set my Hand and caused the Seal of said Department to be affixed at Harrisburg, this Twenty second day of March 1905.

James B. Brown
 Secretary of Internal Affairs.